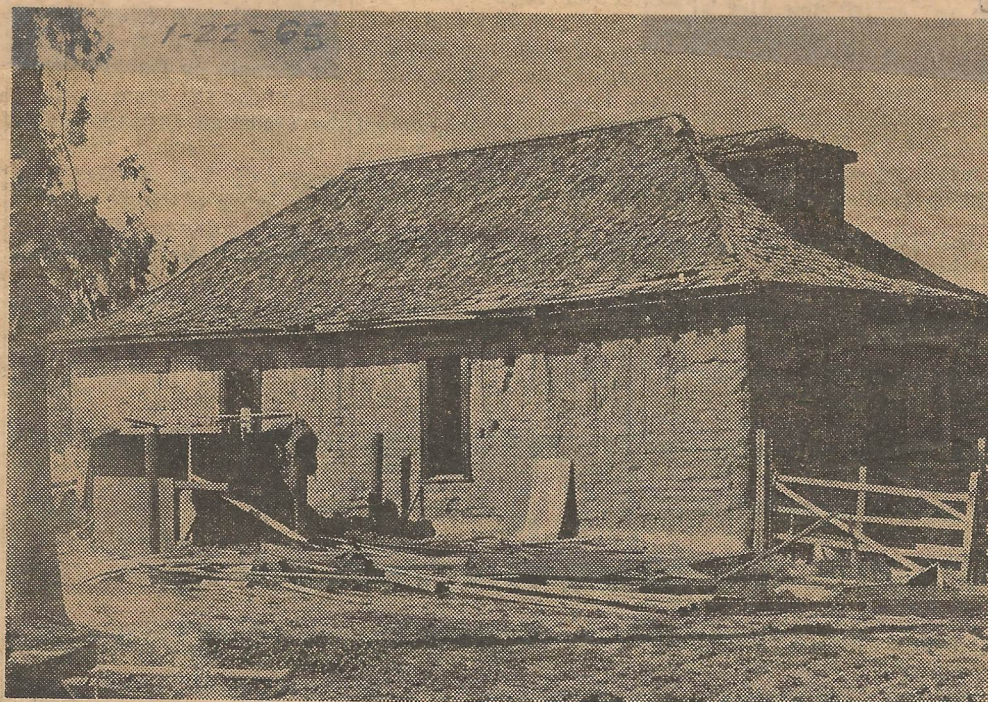


The New Spanishtown Roadhouse.



THE CANTINA—Off North Orange on the county line. It may give way soon to apartments.

Staff Photo

Adobe
Jan. 20, 1965
Cantina

1-20-65

Hearing tomorrow

Historic adobe on county line might be demolished

A hearing scheduled tomorrow morning before the San Bernardino County Planning Commission may lead to demolition of an old adobe at the north edge of Riverside—on an extension of north Orange Street.

It is the younger of two adobes there, the older being entirely in Riverside County and not immediately affected.

BEFORE the commission is a proposal for a subdivision along the county line, to provide for low-rent apartments on a strip between the line and the flood control channel to the north.

The line, it was indicated by surveys incident to the application, goes directly through the dilapidated adobe once known as a cantina—a semi-notorious roadhouse in "Spanishtown" during the prohibition area.

Recently it has been used only for hay storage. A collection of rusting agricultural implements is stored in random fashion next to it.

THE REMAINING adobe in that area, now modernized and occupied by Mr. and Mrs. Robert G. Snider, sits farther back from Pellissier Road (Orange Street extended) and south of the old cantina.

It was the home of one of the branches of the Trujillo family and was part of the La Placita or Spanishtown settlement, dating back to the Mexican period before 1846.

The Snider property extends slightly over the line,

although it is cut off from Pellissier Road except by a right-of-way. The Spanishtown streets evidently did not coincide with present ones.

MRS. SNIDER said they had refused an offer, although she has heard the builder's plans include further development to the south, engulfing their land.

"We didn't take their offer," she explained, "because what could we buy to live in with what they offered?"

La Placita and Agua Mansa, on opposite sides of the river, were founded by a party from New Mexico headed by Lorenzo Trujillo. Land on both sides of the present county line was given to them

by Juan Bandini from his Rancho Jurupa grant, and streets were subsequently mapped as the Bandini Donation.

Bandini's objective was to establish a buffer colony as a protection against Indian horse and cattle raids from across the Mojave Desert.

TED Trujillo and his sister, Mrs. Olive Vlahovich, present-day Riversiders, were born in the Trujillo adobe now occupied by the Sniders.

Applicant for the zoning change to permit the apartments is Roy Griffing. The hearing is scheduled at the 9:30 a.m. session of the commission in the San Bernardino County Health Building, San Bernardino.

The location of the cantina on the county line was a stock in trade in its heyday. Officers arriving from San Bernardino County usually found no illegal activity on their side of the line, and vice versa.

Some Trujillo descendants, however, have subsequently said that the line actually was immediately north of the cantina and that liquor was kept in a small house or shed across the line to the north. Current surveys have confirmed the story that the county line runs directly through it.